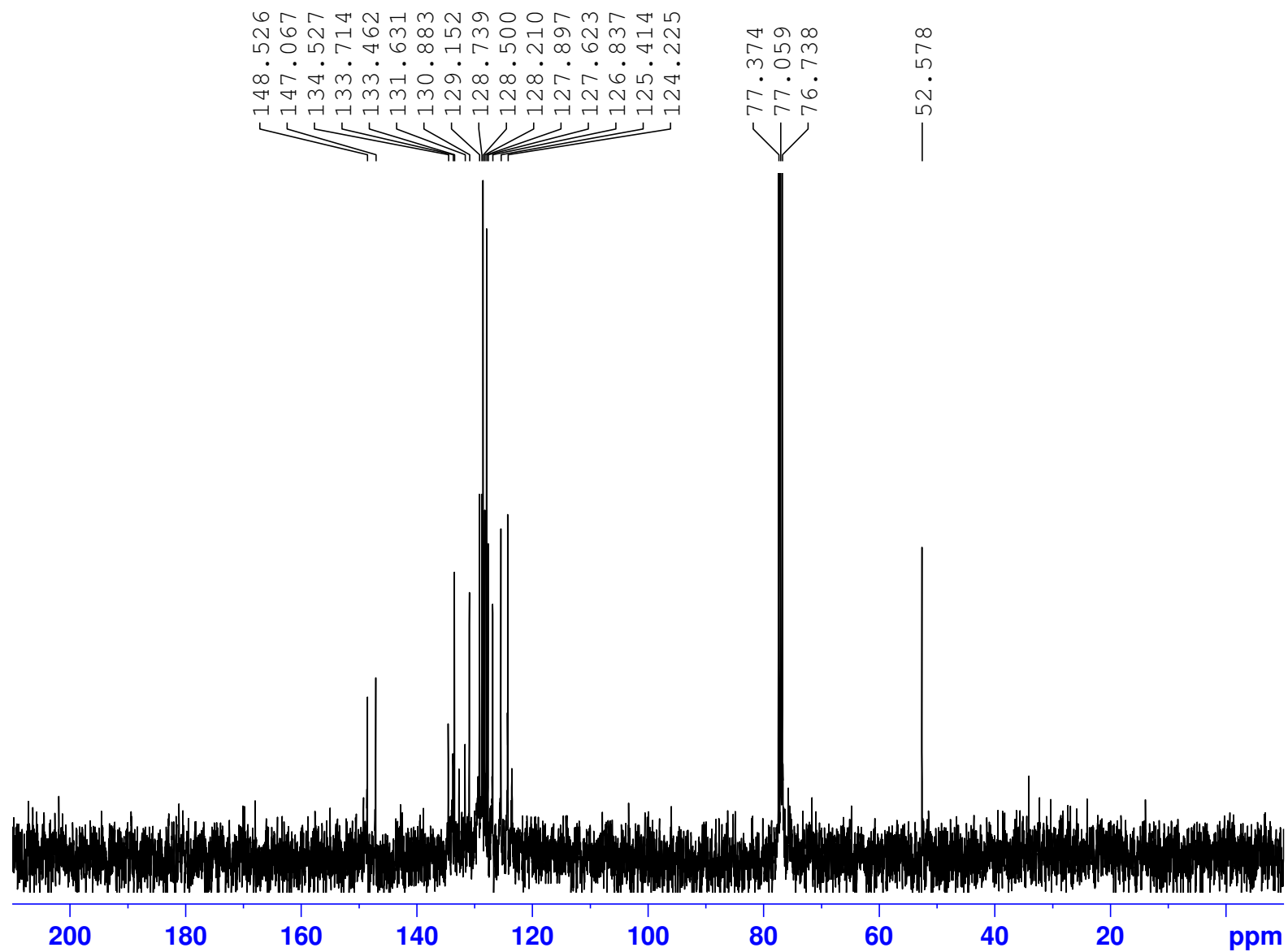


JL39 Pure

Av-400C



Current Data Parameters
NAME Dec18-2024
EXPNO 140
PROCNO 1

F2 - Acquisition Parameters
Date_ 20241218
Time 18.06 h
INSTRUM spect
PROBHD Z820201_0105 (
PULPROG zgpg30
TD 32768
SOLVENT CDCl3
NS 320
DS 4
SWH 28409.092 Hz
FIDRES 1.733953 Hz
AQ 0.5767168 sec
RG 32.05
DW 17.600 usec
DE 6.50 usec
TE 294.7 K
D1 1.00000000 sec
D11 0.03000000 sec
TD0 1
SFO1 100.6414395 MHz
NUC1 13C
P0 4.58 usec
P1 13.75 usec
PLW1 109.90000153 W
SFO2 400.2020010 MHz
NUC2 1H
CPDPRG[2] waltz16
PCPD2 90.00 usec
PLW2 7.24440002 W
PLW12 0.14653000 W
PLW13 0.07370500 W

F2 - Processing parameters
SI 16384
SF 100.6303700 MHz
WDW EM
SSB 0
LB 2.00 Hz
GB 0
PC 1.40